



REMOTE VISUAL INSPECTION

Videoscope Systems

Customers Solution

Videoscopes from 3mm Ø

Flexible Endoscopes from 0.5 mm Ø

Rigid Endoscopes from 1.9 mm Ø

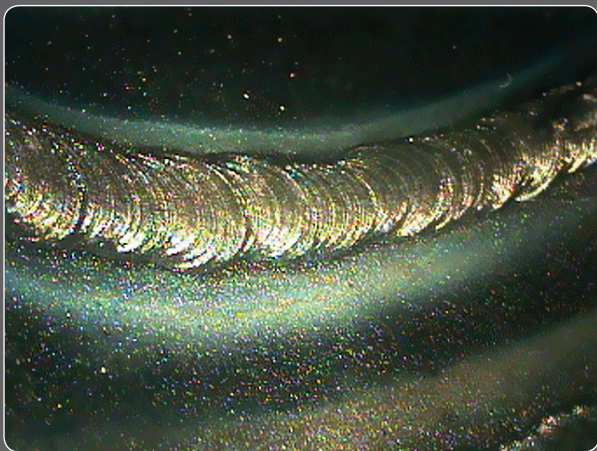
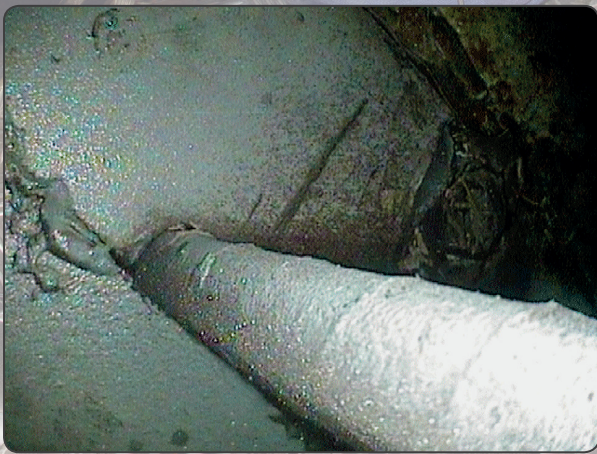
Application Consulting

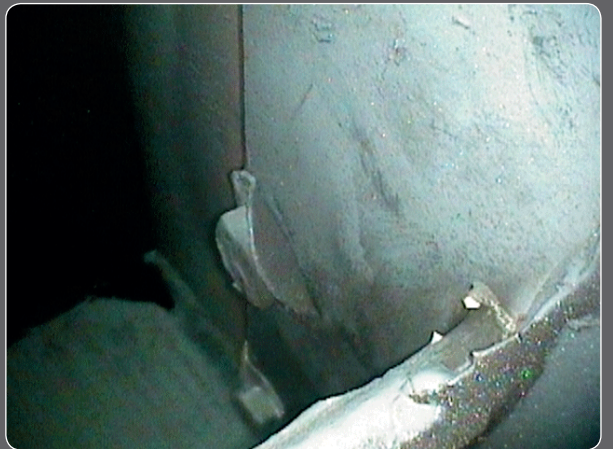
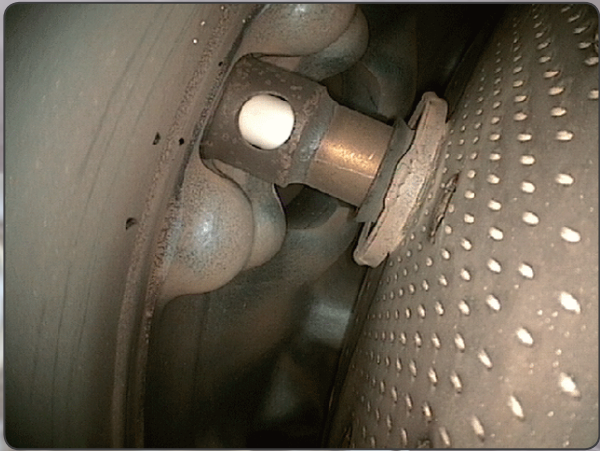
Special Service Packages

Manufacturing and Service in Germany

www.itcworld.com

We build your remote vision!





iRis DVR 5

Portable Videoscope System



Tactile feedback

Thanks to the non-motorized infinite joystick control, users can navigate the probe responsively with tactile feel and precise tip positioning.

Operating unit

Display size:	5.0" (12.7cm) TFT colour
Display resolution:	VGA (640 x 480 pixel)
Operating system:	Real-time operating system with on-screen menu Direct action keys / function keys / arrow keys
Languages:	English, German, Polish, French, Spanish, Italian, Turkish
Video interface:	Composite video-out (BNC)
Power supply, primary:	Rechargeable Li-ion battery
Power supply, secondary:	12V adapter (optional accessories)

Documentation

Video format:	MPEG4 (.avi) (with time and date stamp)
Image format:	BMP (.bmp) (with time and date stamp)
Storage:	SDHC Memory card up to 32GB (FAT32)

Image analysis

Method:	Comparative Measurement
---------	-------------------------

Camera

Image sensor:	High resolution Super HAD CCD image sensor
Camera control:	White balance, AGC level, Gamma, Shutter, Gain Control, Time exposure

Image control

Functions:	<ul style="list-style-type: none"> - 16 step digital zoom - Horizontal and vertical image inversion - Brightness - Contrast - Colour
------------	---

Text annotation:	Built-in text overlay generator
------------------	---------------------------------

Bright and high-contrast display
 Excellent image quality
 Rotatable Monitor
 Ergonomic handle
 Precise articulation control
 High Power LED light source
 Temperature resistant up to 140°C

Focusable and interchangeable objectives lens and side view tip adapters

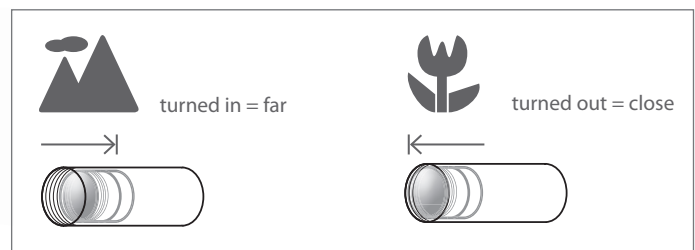


Probe	DOV	FOV	DOF	CODE
4.0mm	0°	60°	7-50mm	
4.0mm	0°	60°	4-10mm	SD
4.0mm	0°	90°	15mm-∞	
4.0mm	0°	90°	10-30mm	SD
4.0mm**	90°	60°	5-45mm	SVTA
6.0mm	0°	60°	5mm-∞	BLACK
6.0mm	0°	60°	8mm-∞	YELLOW-B
6.0mm	0°	90°	5mm-∞	RED
6.0mm	0°	120°	3mm-∞	GREEN
6.0mm**	90°	60°	5-15mm	SVTA-CF
6.0mm**	90°	60°	15-50mm	SVTA-FF
8.0mm	0°	28°	25mm-∞	BLUE
8.0mm	0°	60°	5mm-∞	BLACK
8.0mm	0°	60°	8mm-∞	YELLOW-B
8.0mm	0°	90°	8mm-∞	SILVER-B
8.0mm	0°	90°	5mm-∞	RED
8.0mm**	90°	60°	5mm-∞	SVTA



SMART-FOCUS

Close focus and far focus



DOV = Direction of view CF = Close focus FOV = Field of view FF = Far focus DOF = Depth of focus B = Bright objective lens SVTA = Side view tip adapter (90°DOV) **Compatible to FOV60°

Probe

	4.0mm	6.0mm	8.0mm
Diameter:	4.0mm	6.0mm	8.0mm
Working length:	1.5 - 4.0m	1.5 - 7.5m	1.5 - 7.5m
Articulation:	4-way / 360°	4-way / 360°	4-way / 360°
Integrated objective lens:	X	-	-
Interchangeable objective:	-	X	X
Side view tip adapter:	X (60° FOV)	X	X
Braid:	Multi-layer tungsten braid on PU jacket		

Illumination

Type:	High-power LED with high transmission fiberoptics
Illumination control:	3 steps
Colour temperature:	approx. 6500k.
Average lamp lifetime:	approx. 5000h

Device

Ergonomics:	± 90° rotatable display, alt. ±90° rotatable handle
Weight:	1.35Kg
Dimensions:	180mm X 105mm X 45mm
Housing:	Rugged PU, with integrated rubber shock caps
Tip operating temperature:	140°C less than 5 Minutes -25°C to +80°C
System operating temperature:	-25°C to +46°C
Storage temperature:	-25°C to +60°C
Relative humidity:	95% less than - non condensing
Waterproof:	Probe and distal End up to 1 bar- 10.2m H ₂ O
Resistance:	Probe and distal End to oils and saline (5%)

iRis DVR X

Portable Videoscope System



Tactile feedback

Thanks to the non-motorized infinite joystick control, users can navigate the probe responsively with tactile feel and precise tip positioning.

Documentation unit

Display size:	5.0" (12.7cm) TFT colour
Display resolution:	VGA (640 x 480 pixel)
Operating system:	Realtime operating system, with on-screen menu Direct action keys / function keys / arrow keys
Language:	English, German, Polish, French, Spanish, Italian, Turkish
Video interface:	Composite video-out (BNC)
Power supply, primary:	Rechargeable Li-ion Akku
Power supply, secondary:	12V Adapter (optional accessory)

Storage

Video format:	MPEG4 (.avi) (with time and date stamp)
Image format:	BMP (.bmp) (with time and date stamp)
Storage:	SDHC Memory card up to 32GB (FAT32)

Image analysis

Method:	Comparative Measurement
---------	-------------------------

Camera

Image sensor:	AIT CMOS Image sensor
Camera control:	White balance, AGC level, Gamma, Shutter, Gain Control, Langzeitbelluminationung

Image control

Functions:	- 16 steps digital zoom - Horizontal and vertical image inversion - Brightness - Contrast - Colour
------------	--

Text annotation:	Built-in text overlay generator
------------------	---------------------------------

+ Extreme economical

Large Display

LED-Beleuchtung

Fast and easy to use

Up to 6 hours operation

Portable

90° Side View Tip Adapter

Economical Repair Service



Probe

Diameter:	4.0mm	6.0mm
Working length:	1.5 - 4.0m	1.5 - 7.5m
Articulation:	4-way / 360°	4-way / 360°
Integrated objective:	90° FOV	90°FOV
Side view tip adapter:	-	X
Braid:	Multi-layer tungsten braid on PU jacket	

Illumination

Type:	High power LED (4mm with high transmission fibreoptics / 6mm - LED on the tip)
Illumination control:	3 steps
Colour temperature:	approx. 6500k
Average lamp lifetime:	approx. 5000h

Construction

Ergonomics:	± 90° rotatable display, alt. ±90° rotatable handle
Weight:	1,35Kg
Dimensions:	180mm x 105mm x 45mm
Housing:	Rugged PU, with integrated rubber shock caps
Tip operating temperature:	-13°F to 176°F (-25°C to +80°C)
System operating temperature:	-13°F to 115°F (-25°C to +46°C)
Storage temperature:	-13°F to 140°F (-25°C to +60°C)
Relative humidity:	95% less than - non condensing
Waterproof:	Probe and distal End up to 1 bar- 10.2m H2O
Resistance:	Probe and distal End to oils and saline (5%)

iTool DVR **Scalable** | |

Modular Videoscope System



iTool DVR

Model

Connectable to: iSeries Videoproben
iWC Working Channel
UV Proben
Cube Cam (Faser- and Starres Endoskop)
X-LED Videoproben

Device

Display size: 7" TFT Colour
Display resolution: VGA (640x480 Pixel)
Operating system: Realtime operating system, with on-screen menu
Direct action keys / function keys / arrow keys
Language: English, German, Polish, French, Spanish, Italian, Turkish
Video interface: Composite Video-out, Composite Video-in, S-Video-in
Audio interface: 3.5mm Audio-in / Audio-out

Power supply, primary: 12V via AC-Adapter
Power supply, secondary: 12V via Batterie Belt

Image analysis

Method: Comparative Measurement

Storage

Video format: MPEG4 (.avi) (with time and date stamp)
Image format: BMP (.bmp) (with time and date stamp)
Storage: SD-HC-Memory card up to 32GB (FAT32)

Camera settings

Functions: White balance, AGC level, Gamma, Shutter, Gain Control

Modular documentation unit
 Extrem flexible in use
 High resolution monitor

Station or portable
 Interchangeable probes and cameras

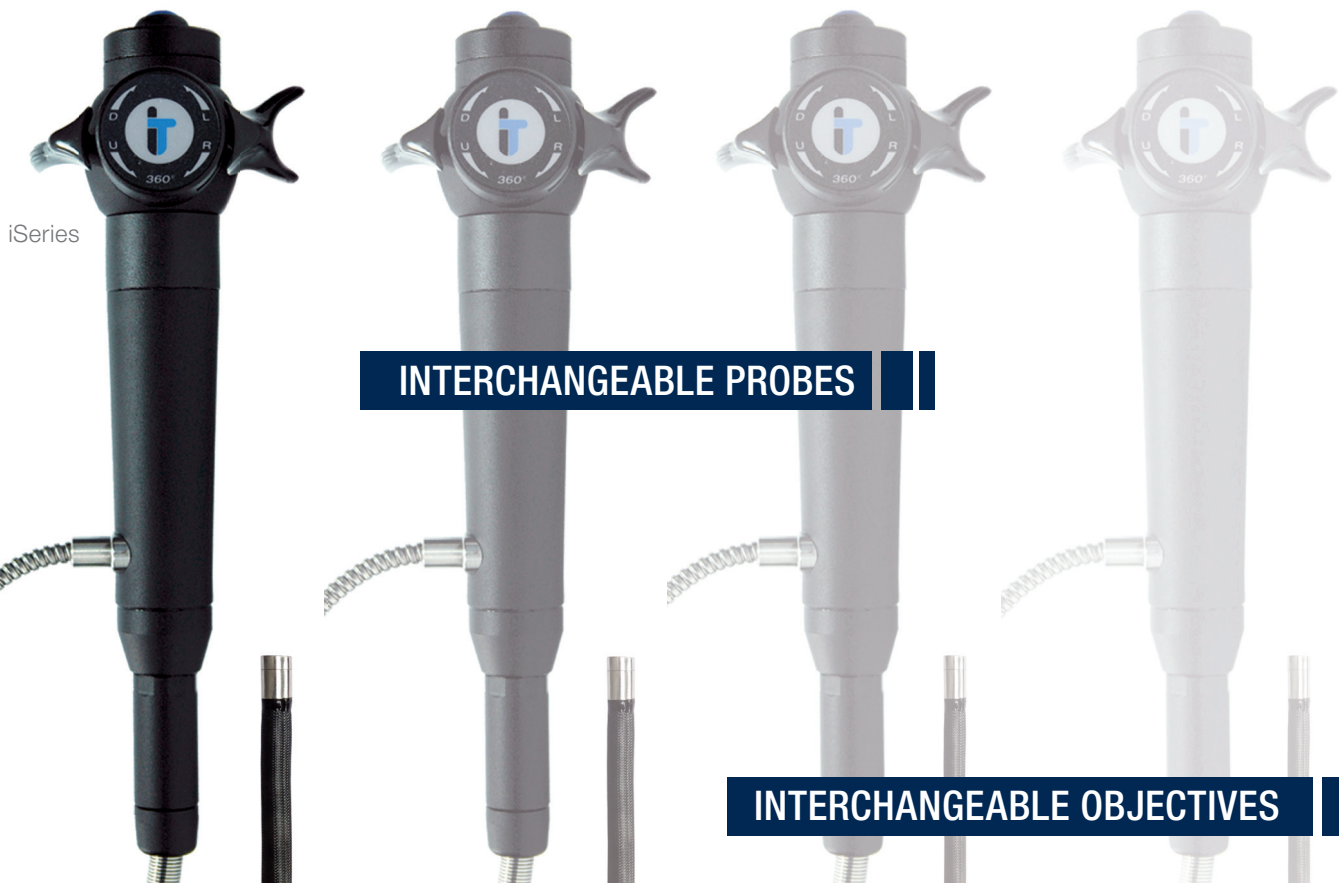


Image control

Functions: - 16 steps digital zoom
 - Horizontal and vertical image inversion
 - Brightness
 - Contrast
 - Colour

Text annotation: Built-in text overlay generator

Illumination

Type: 24Watt Metal Halide
 Illumination control: stepless/manual
 Colour temperature: approx. 6000k
 Average lamp lifetime: approx. 500h

Device

Weight: 2,25kg Device / 9,2kg incl. Probe and Case
 Dimensions: 290mm x 190mm x 70mm
 Housing: Rugged PU
 Frame: Alluminium
 Tip operating temperature: 14°F to 176°F (-10°C to +80°C)
 System operating temperature: - 13°F to 113°F (-25°C to +45°C)
 Storage temperature: - 13°F to 113°F (-25°C to +45°C)
 Relative humidity: 95% less than - non condensing

Interchangeable Probes



iTool DVR IWC WORKING CHANNEL Scalable

Modular Videoscope System



Working Channel



alternative iCapture DVR



Interchangeable Tools



Snare Basket



Three Prong Grabber



Hook



Magnet



90° Side View Tip Adapter

Video interface

Connectable to:

- iTool DVR
- iCapture DVR
- USB Frame Grabber
- Composite Video

Wechsel-Proben

	4.0mm	6.0mm	8.0mm
Diameter:	4.0mm	6.0mm	8.0mm
Working length:	1.5m - 4.0m	1.5m - 15m	1.5m - 15m
Articulation:	4-way / 360°	4-way / 360°	4-way / 360°
Integrated objective:	x	-	-
Interchangeable Objectives:	-	x	x
Working channel (iWC)	-	-	x
UV version	-	x	x
Side view tip adapter:	o (**60° FOV)	x	x
Braid:	Multi-layer tungsten on PU jacket		
Tip operating temperature:	- 13°F to 176°F (-25°C to +80°C) 140°C less than 5 Minutes		
System operating temperature:	- 13°F to 115°F (-25°C to +46°C)		
Storage temperature:	- 13°F to 140°F (-25°C to +60°C)		
Relative humidity:	95% less than - non condensing		
Waterproof:	Probe and distal End up to 1 bar- 10.2m H2O		
Resistance:	Probe and distal End to oils and saline (5%)		

iTool DVR **UV** Illumination **Scalable**

Modular Videoscope System



iTool DVR

UV Lightsource + **UV** Endoscope

Interchangable Objectives and Side View Tip Adapter SVTA

Probe	DOV	FOV	DOF	CODE
4.0mm	0°	60°	7-50mm	
4.0mm	0°	60°	4-10mm	SD
4.0mm	0°	90°	15mm-∞	
4.0mm	0°	90°	10-30mm	SD
4.0mm**	90°	60°	5-45mm	SVTA
6.0mm	0°	60°	5mm-∞	BLACK
6.0mm	0°	60°	8mm-∞	YELLOW-B
6.0mm	0°	90°	5mm-∞	RED
6.0mm	0°	120°	3mm-∞	GREEN
6.0mm**	90°	60°	5-15mm	SVTA-CF
6.0mm**	90°	60°	15-50mm	SVTA-FF

Probe	DOV	FOV	DOF	CODE
8.0mm	0°	28°	25mm-∞	BLUE
8.0mm	0°	60°	5mm-∞	BLACK
8.0mm	0°	60°	8mm-∞	YELLOW-B
8.0mm	0°	90°	8mm-∞	SILVER-B
8.0mm	0°	90°	5mm-∞	RED
8.0mm**	90°	60°	5mm-∞	SVTA

DOV = Direction of view

FOV = Field of view

DOF = Depth of focus

SVTA = Side view tip adapter (90°DOV)

**Compatible to FOV60°

CF = Close focus

FF = Far focus

B = Bright objective lens

iLED

Scalable

Modular Videoscope System

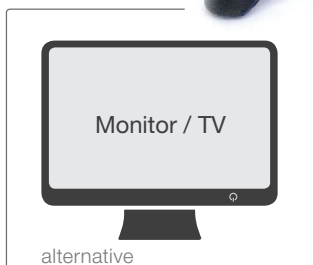


iCapture DVR

- Documentation unit
- 24/7 Operation
- Interchangeable with all Borescopes
- High-resolution 5" LCD screen
- Image capture, video recording to SD Card
- AC or rechargeable battery DC Operation
- Interchangeable Videoscopes



iLED



Monitor / TV

alternative

Operating unit

Display:	5.0" (12.7cm) TFT colour/nonreflecting
Operating system:	Real-time operating system, with on-screen menu
User interface:	Direct action keys / function keys / arrow keys
Languages:	English, German, Polish, French, Spanish, Italian, Turkish
Video interface:	Composite video-out (BNC)
Power supply, primary:	Rechargeable Li-ion battery Operating time more than 2 h
Power supply, secondary:	12V adapter (optional accessory)

Documentation

Saving/recording:	Video recording Direct image capturing / Freeze modus MPEG4 (.avi) (with time and date stamp)
Video format:	BMP (.bmp) (with time and date stamp) Could be converted to JPG at PC
Image format:	SDHC memory card up to 32GB (FAT32) 8GB /SDHC in device when delivered
Storage:	

Measurement

Method	Comparative Measurement
--------	-------------------------

Camera control

Inegration modes:	automatic frame integration standard / manuell / short / long Factory default or user defined
White balance:	Adjustable
AGC level (gain control):	Adjustable
Gamma:	Adjustable

Image control

Zoom:	3.5X / 16 step variable
Invert:	Horizontal and vertical image inversion
Brightness:	Adjustable
Contrast:	Adjustable
Colour:	Adjustable
Text annotation:	Built-in text overlay generator

Construction

Ergonomics:	rotatable display unit
System weight:	1,12kg
Dimensions:	205mm X 180mm X 70mm
Housing:	Rugged PU, with integrated rubber shock caps

- Operable by left/right handed users
- Excellent image quality
- Interchangeable lenses
- Integrated LED
- Ergonomic handle
- Precise and tactile articulation control
- Temperature resistant up to 140°C

- Variable video interface
- Compact and versatile
- Water & dust resistant
- Easy to carry, easy to setup, light in weight
- Compact case IATA standard



Objective

PROBE	DOV	FOV	DOF	CODE
4.0mm	0°	60°	7-50mm	
4.0mm	0°	90°	15mm-∞	
4.0mm**	90°	60°	5-45mm	SVTA

Interchangeable Objective

PROBE	DOV	FOV	DOF	CODE
6.0mm	0°	60°	5mm-∞	BLACK
6.0mm	0°	60°	8mm-∞	YELLOW-B
6.0mm	0°	90°	5mm-∞	RED
6.0mm	0°	120°	3mm-∞	GREEN
6.0mm**	90°	60°	5-15mm	SVTA-CF
6.0mm**	90°	60°	15-50mm	SVTA-FF

PROBE	DOV	FOV	DOF	CODE
8.0mm	0°	28°	25mm-∞	BLUE
8.0mm	0°	60°	5mm-∞	BLACK
8.0mm	0°	60°	8mm-∞	YELLOW-B
8.0mm	0°	90°	8mm-∞	SILVER-B
8.0mm	0°	90°	5mm-∞	RED
8.0mm**	90°	60°	5mm-∞	SVTA

Operating environment

System operating temp.:	-13°F to 115°F (-25°C to +50°C)
Storage temperature:	-13°F to 140°F (-25°C to +60°C)
Protection Class:	IP 53
Relative humidity:	95% max. - non condensing

Probe

Sensor image:	High Resolution 1/6" Image Sensor		
Resolution:	total 752 x 582 px / 440.000 pxls		
Diameter:	4.0 mm	6.0 mm	8.0 mm
Working length:	4.9 - 13.1ft (1.5 - 4.0 m)	4.9 - 13.1ft (1.5 - 7.5 m)	4.9 - 13.1ft (1.5 - 7.5 m)
Articulation (bending neck):	4-way / 360°	4-way / 360°	4-way / 360°
Integrated objective lens:	X	-	-
Interchangeable objective lens:	-	X	X
Side view tip adapter:	X (with 60° FOV lens)	X	X
Braid:	Multi-layer tungsten braid on PU jacket		
Interchangeable Objective Lens:	X		
Side View Tip Adapter:	X		
Braid:	Multi-layered tungsten braid		
Protection Class:	IP 53		

Illumination

Tip:	High Power LED
Average lamp lifetime:	approx. 15.000 h

Operating environment

Tip operating temperature:	-13°F to 176°F (-25°C to +80°C) (284°F/140°C less than 5 Minutes)
Storage temperature:	-13°F to 140°F (-25°C to +60°C)
Relative humidity:	95% max. - non condensing
Protection Class:	IP 55
Waterproof:	Probe and distal end up to 14.7 psi (1 bar- 10.2m H2O) Hydrostatic head of 5 meters
Resistance:	Probe and distal end to oils, saline (5%) and petroleum fluids

XLED Scalable

Modular Videoscope System



iCapture DVR



alternative



3mm



0°

90° Side view
Tip Adapter

Documentation unit

Display size:	5.0" (12.7cm) TFT Colour
Display resolution:	VGA (640 x 480 pixel)
Operating system:	Realtime operating system, with on-screen menu Direct action keys / function keys / arrow keys
Language:	English, German, Polish, French, Spanish, Italian, Turkish
Video interface:	Composite video-out (BNC)
Power supply, primary:	Rechargeable Li-ion Akku
Power supply, secondary:	12V Adapter (optional accessory)

Storage

Video format:	MPEG4 (.avi) (with time and date stamp)
Image format:	BMP (.bmp) (with time and date stamp)
Storage:	SDHC Memory card up to 32GB (FAT32)

Image analysis

Method:	Comparative Measurement
---------	-------------------------

Camera settings

Functions:	White balance, AGC level, Gamma, Shutter, Gain Control, Time exposure
------------	---

Image control

Functions:	- 16 steps digital zoom - Horizontal and vertical image inversion - Brightness, contrast, colour Built-in text overlay generator
Text annotation:	

Device

Ergonomics:	rotatable display
Weight:	1.12kg
Dimensions:	205mm x 180mm x 70mm
Housing:	Rugged PU, with integrated rubber shock caps
System operating temperature:	-13°F to 115°F (-25°C to +46°C)
Storage temperature:	-13°F to 140°F (-25°C to +60°C)
Relative humidity:	95% less than - non condensing

+ Small diameter - 3.0 and 4.0mm

Perfect price performance ratio

Clear images by high resolution sensor

LED lighting for low power consumptions

Direction of view 0° direct and 90° Side view

Faster and more economical repair and service



XLED

X-LED Video interface

Connectable to: iTool DVR , iCapture DVR,
USB Frame Grabber,
Composite Video

Camera

Image sensor: AIT CMOS Image sensor
Camera control: Automatically

Probe

Braid: Multi-layer tungsten
on PU jacket

Tip operating temperature: -13°F to 176°F (-25°C to +80°C)
System operating temperature: -13°F to 150°F (-25°C to +46°C)
Storage temperature: -13°F to 140°F (-25°C to +60°C)
Relative humidity: 95% less than - non condensing
Waterproof: Probe and distal end
up to 1 bar- 10.2m H2O
Resistance: Probe and distal end
to oils and saline (5%)

Probe

Diameter:	3.0 and 4.0mm	3.0 and 4.0mm
Working length:	1.5m	1.5m
Articulation:	2 way	2 way
Articulation L/R:	130°/130°	130°/130°
Integrated objective:	90° FOV	90° FOV
Weight:	90° version 280g	0° version 500g
Dimensions:	220 x 40 x 60mm	290 x 50 x 50mm

Illumination

Type:	DOV 90° side view LED on the tip	DOV 0° LED with fiberoptic
Control	ON/OFF	ON/OFF
Colour temperature:	approx. 6500k	approx. 6500k
Average lamp lifetime:	approx. 500h	approx. 5000h

iFLEX

Flexible Fiberscope

High resolution

Robust in use

Optical image guide made from highly flexible fibre glass

Focusable eyepiece

Direct view / side view lens

Variable working lengths

Many different probe diameters

Angular deflection of the probe tip

Diameter 2.4mm - 8.0mm



Probe Ø 2.4mm

Lenght	Articulation	DoV	FoV	Pixel
0.4m	2 way ±120° L/R	0°	45°	6000
0.7m	2 way ±120° L/R	0°	45°	6000
1.4m	2 way ±120° L/R	0°	45°	6000
1.3m	2 way ±120° L/R	0°	45°	6000

Probe Ø 3.5mm

Lenght	Articulation	DoV	FoV	Pixel
0.7m	2 way ±120° L/R	0°	50°	8000
1.0m	2 way ±120° L/R	0°	50°	8000
1.3m	2 way ±120° L/R	0°	50°	8000
1.5m	2 way ±120° L/R	0°	50°	8000

Probe Ø 4.0mm

Lenght	Articulation	DoV	FoV	Pixel
1.0m	2 way ±120° L/R	0°/90°	50°	11500
1.3m	2 way ±120° L/R	0°/90°	50°	11500
1.5m	2 way ±120° L/R	0°/90°	50°	11500
2.0m	2 way ±120° L/R	0°/90°	50°	11500

Probe Ø 6.0mm

Lenght	Articulation	DoV	FoV	Pixel
1.0m	2 way ±120° L/R	0°/90°	60°	12000
1.5m	2 way ±120° L/R	0°/90°	60°	12000
2.0m	2 way ±120° L/R	0°/90°	60°	12000
2.7m	2 way ±120° L/R	0°/90°	60°	12000
1.0m	4-way ±100° L/R - 160° UP - 130° DW	0°/90°	60°	12000
1.5m	4-way ±100° L/R - 160° UP - 130° DW	0°/90°	60°	12000
2.0m	4-way ±100° L/R - 160° UP - 130° DW	0°/90°	60°	12000
2.7m	4-way ±100° L/R - 160° UP - 130° DW	0°/90°	60°	12000

Probe Ø 8.0mm

Lenght	Articulation	DoV	FoV	Pixel
1.0m	4-way ±100° L/R - 160° UP - 130° DW	0°/90°	60°	16000
1.5m	4-way ±100° L/R - 160° UP - 130° DW	0°/90°	60°	16000
2.0m	4-way ±100° L/R - 160° UP - 130° DW	0°/90°	60°	16000
2.7m	4-way ±100° L/R - 160° UP - 130° DW	0°/90°	60°	16000

Braid : Multilayer tungsten

microFLEX

Flexible Fibrescope

Elegant, high resolution, flexible
Variable working lengths
Many different probe diameters
Special designs possible on request

Optical image guide made from
highly flexible fibre glass
Diameter 0.5mm - 1.8mm



Probe Ø	Working length	Bending Radius	DoV	FoV	Pixel	Braid
0.5mm	special designs up to 2000mm	min. 20mm	0°	70°	6000	PU
0.7mm	special designs up to 2000mm	min. 20mm	0°	70°	6000	PU
0.9mm	special designs up to 2000mm	min. 20mm	0°	70°	6000	PU
1.2mm	special designs up to 2000mm	min. 20mm	0°	70°	6000	PU
1.4mm	special designs up to 2000mm	min. 20mm	0°	70°	10000	PU
1.6mm	special designs up to 2000mm	min. 20mm	0°	70°	10000	PU
1.8mm	special designs up to 2000mm	min. 20mm	0°	70°	10000	PU

RIGID ENDOSCOPES

MULTI SWING PRISM

Robust, high precision optics

Special rotation 370°

Line of vision 7° to 133°

Angle of vision 45°

Variable working lengths

Many different probe diameters

Special designs possible on request



Ø 6.0mm

Lenght	DoV	FoV	rotatable
175mm	-7° to 133°	45°	370°
245mm	-7° to 133°	45°	370°
315mm	-7° to 133°	45°	370°
385mm	-7° to 133°	45°	370°
455mm	-7° to 133°	45°	370°
945mm	-7° to 133°	45°	370°

Ø 8.0mm

115mm	-7° to 133°	45°	370°
185mm	-7° to 133°	45°	370°
255mm	-7° to 133°	45°	370°
325mm	-7° to 133°	45°	370°
395mm	-7° to 133°	45°	370°
465mm	-7° to 133°	45°	370°
605mm	-7° to 133°	45°	370°

Ø 9.0mm

Lenght	DoV	FoV	rotatable
205mm	-7° to 133°	45°	370°
305mm	-7° to 133°	45°	370°
405mm	-7° to 133°	45°	370°
505mm	-7° to 133°	45°	370°
605mm	-7° to 133°	45°	370°
705mm	-7° to 133°	45°	370°

INDUSTRIAL LINE

High precision, rigid, semi flexible
 Ideal for small cavities
 Durable design

Variable Working lengths
 Many different probe diameters
 Special designs possible on request



Standard

Ø 2.7mm

Lenght	DoV	FoV	Type
175mm	0°	80°	Starr
175mm	0°	80°	Semi
175mm	30°	80°	Starr
175mm	30°	80°	Semi
175mm	70°	80°	Starr

Ø 4,0mm

Lenght	DoV	FoV	Type
175mm	0°	80°	Starr
175mm	0°	80°	Semi
175mm	30°	80°	Starr
175mm	30°	80°	Semi
175mm	45°	80°	Starr
175mm	70°	80°	Starr
302mm	0°	80°	Starr
302mm	0°	80°	Semi
302mm	30°	80°	Starr
302mm	30°	80°	Semi

With mirror tube

Ø 1.9mm

Lenght	DoV	FoV	Mirror tube
up to 240mm	0°	45°	90°/2.7mm
Ø 6.0mm			
Lenght	DoV	FoV	Spiegelrohr
245mm	-7° to 133°	45°	370°
315mm	-7° to 133°	45°	370°
385mm	-7° to 133°	45°	370°
455mm	-7° to 133°	45°	370°
945mm	-7° to 133°	45°	370°

Ø 8.0mm

Lenght	DoV	FoV	Mirror tube
115mm	-7° to 133°	45°	370°
185mm	-7° to 133°	45°	370°
255mm	-7° to 133°	45°	370°
325mm	-7° to 133°	45°	370°
395mm	-7° to 133°	45°	370°
465mm	-7° to 133°	45°	370°
605mm	-7° to 133°	45°	370°

With mirror tube

Ø 9.0mm

Lenght	DoV	FoV	Mirror tube
205mm	-7° to 133°	45°	370°
305mm	-7° to 133°	45°	370°
405mm	-7° to 133°	45°	370°
505mm	-7° to 133°	45°	370°
605mm	-7° to 133°	45°	370°
705mm	-7° to 133°	45°	370°

SERVICE ✓

As soon as possible and not longer than 15 working days

In event of a service, you have only to do 2 things:

Your device is defective!

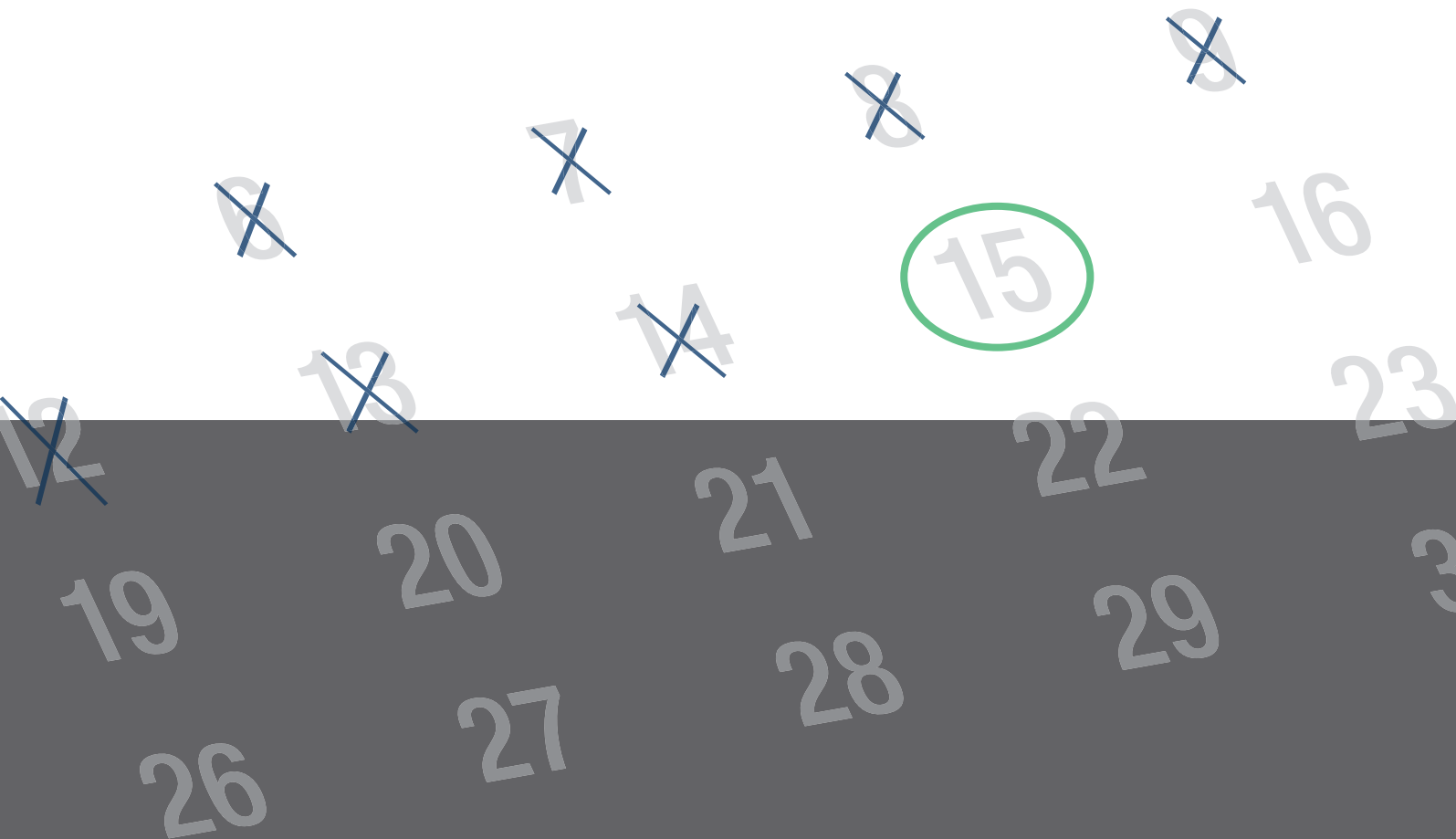
1. Please send us the device.

At the latest after 48 hours we will provide you with a detailed cost estimate for the lump sum repair price.

2. Please approve this cost estimate

We will send you back the device free of charge after 15 working days at the latest .

You can still plan with your device despite the failure!



Special design possible

Ask for your special solution

You are looking for your special solution.

The possible areas of application for the industrial endoscopy and technical endoscopy are practically infinite.

We are certain that we already have the matching solution for your requirements or will be able to develop it.

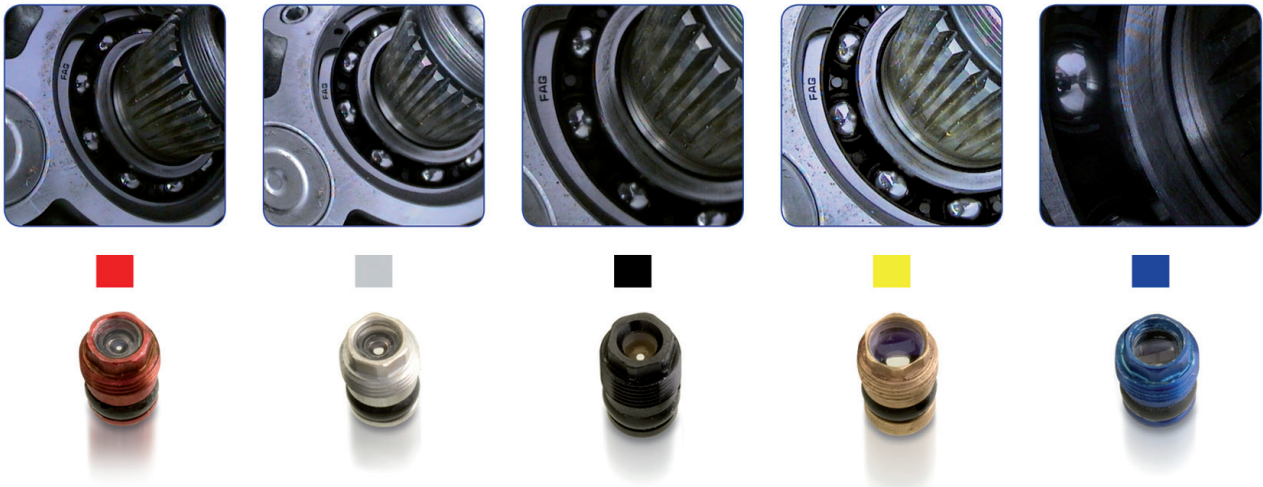
IT Concepts is developer and manufacturer of:

Cameras | Special Cameras | Video Electronic | Camera Components | Flexible Image Guides
Fiber Optics and optical Components | Precision Mechanics

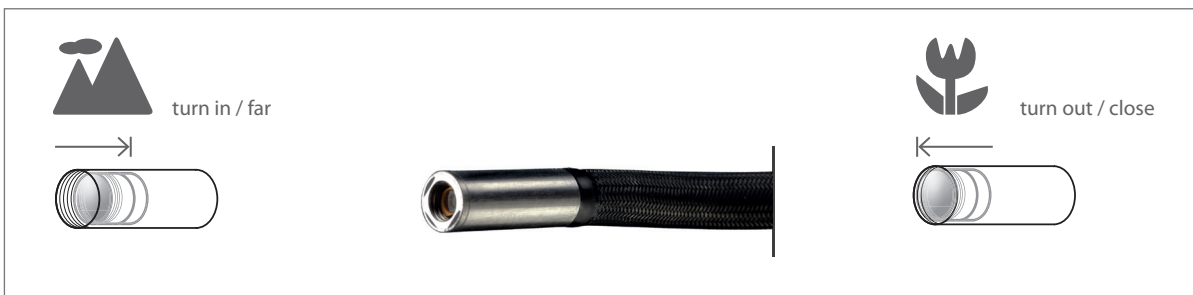
Describe your requirements to us!

Interchangeable Objectives

For different applications

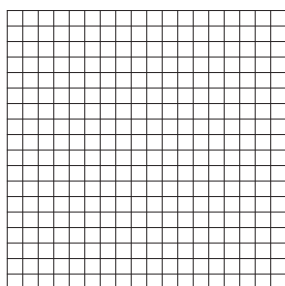
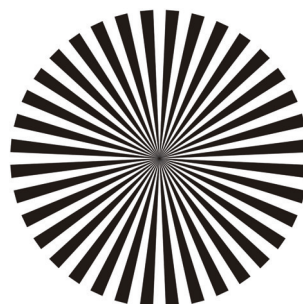
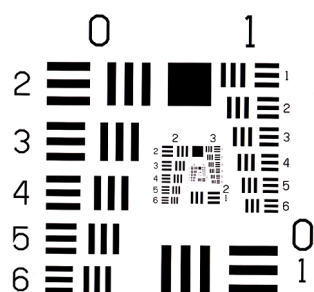


SMART-FOCUS Close focus and far focus with only one objective lens.



It's not necessary anymore to buy another objective lens, if a different focal length is needed. In comparison with fix focus lenses, SmartFocus lenses save not only the complicated lens changing process, they also save additional/hidden costs. SmartFocus lenses with different field of view (FOV), f-stops (f-stop) and depth of field (DOF) are available.

TEST-Chart



Equipment and Accessories

Batterie Belt | USB 2.0 Frame Grabber | Inspection Guides | Device Clamp | Lightsources
Cameras | Camera Adapters | Power Supply | Lightguide Cable | Lightguide Adapters
Neck Holder | Cases | Side View Tip Adapter | Objectives | Special Working Tools | Centerizer | ...

MADE IN GERMANY

IT Concepts designs and manufactures worldwide with over 500 highly qualified and motivated employees electronic and optomechanical assembly groups and systems.

The product range extends from individual components for industrial and medical endoscopes over to video endoscopic systems and solutions for Remote Visual Inspection and Security.

For more than 10 years IT Concepts develops and produces all endoscopes „Made in Germany“ at the European headquarters Lahnau near Wetzlar, the City-of-Optics.

The top priority for the entire team in Lahnau is to provide customers with expertise and excellent service.

IT Concepts GmbH
Gewerbestr. 17
35633 Lahnau
Germany

Tel. + 49 6441 679 299 0
Fax + 49 6441 679 299 99
Mail info@itcworld.com